

# **SOLUTIONS@SOURCE**

## *Hard Tag Application Guidelines*



GENJUSE\_HT\_V01\_100910

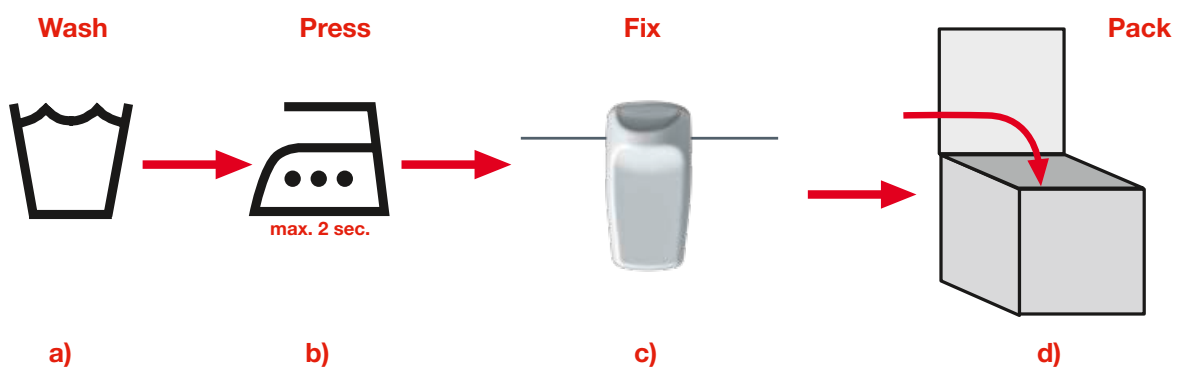


## Important Considerations for Hard Tag application during the confection process:

1. Hard Tags are NOT designed to withstand aggressive processes such as washing, dry cleaning, stone washing, ironing, pressing, spinning or tumble dry cleaning cycles used in the confection process.



2. HARD TAGS SHOULD BE APPLIED TO GARMENTS DURING THE LAST STEP OF FOLDING AND PACKING.



For any questions regarding this or any other labelling process contact your local Checkpoint representative.



Important Considerations for Hard Tag application during the confection process:



No washing or stone washing



No spinning or tumble drying



No dry cleaning



No wringing



No bleaching



Not in metal cans

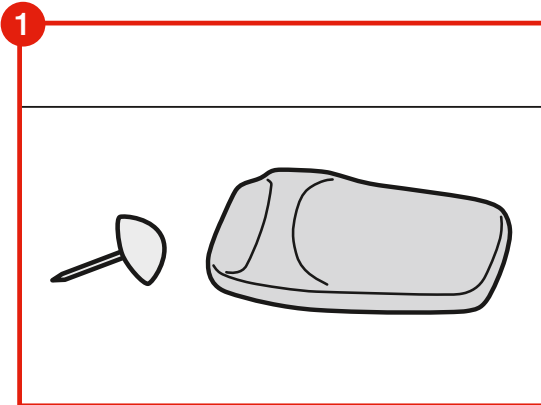


Not in metalized presentation boxes

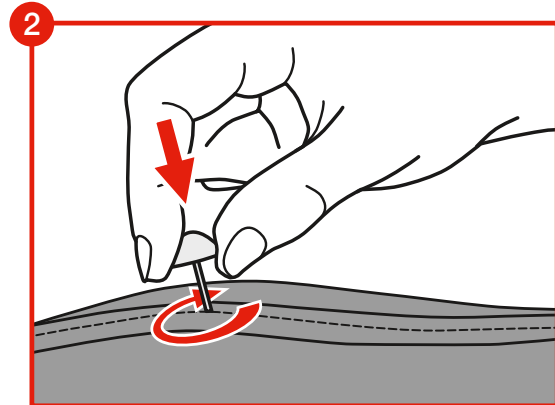
For any questions regarding this or any other labelling process contact your local Checkpoint representative.



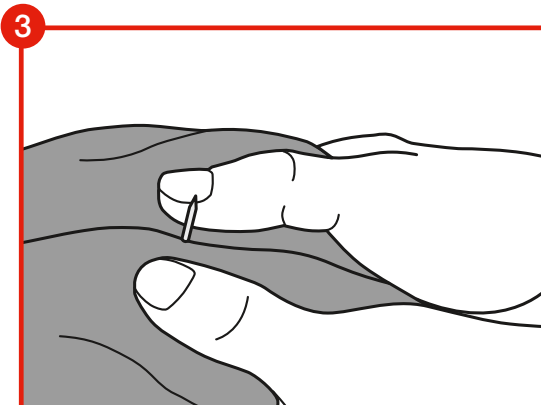
Important Considerations for Hard Tag application during the confection process:



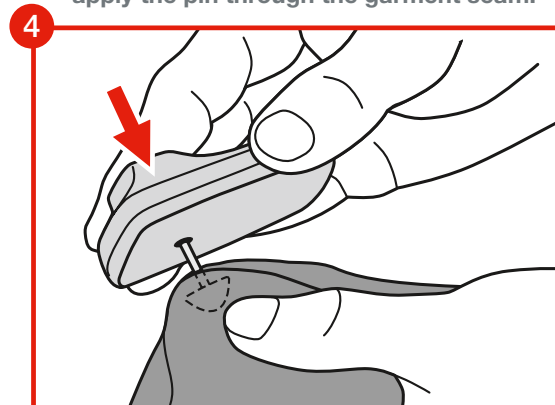
**1** To start: Pins and Hard Tags should be separated from each other.



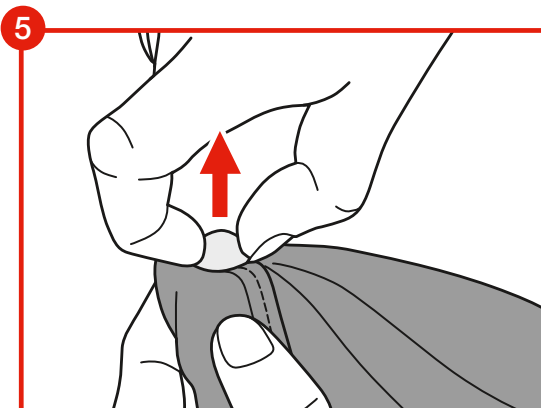
**2** Push and rotate the pin to open fabric fibres and avoid damage. Important! Always apply the pin through the garment seam.



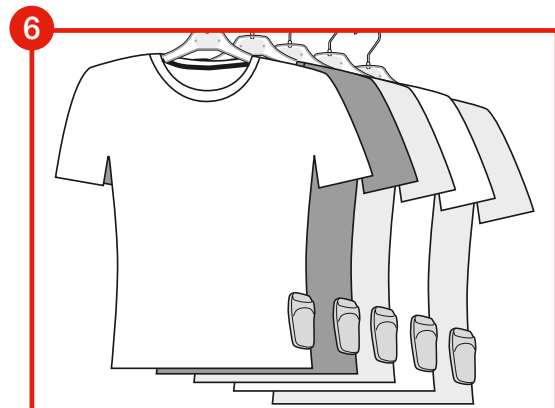
**3** Push the pin through fabric until the stem is seen on the outside of the garment.



**4** Line up the pin with the hole in the Hard Tag and push in as far as it will go.



**5** Ensure pin is locked by gently pulling upwards.

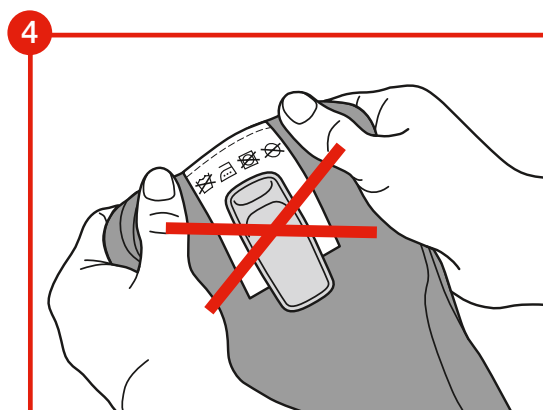
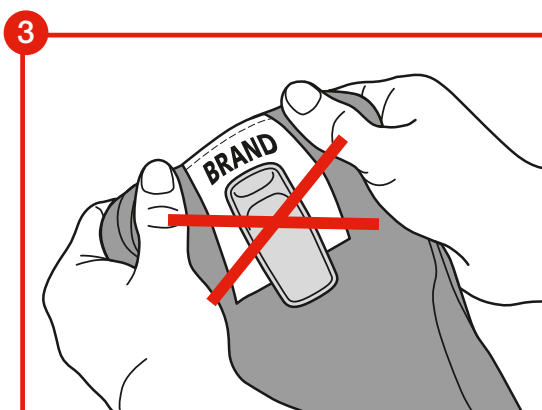


**6** Tags should always be visible from the outside and fixed in the same position.

For any questions regarding this or any other labelling process contact your local Checkpoint representative.



Important Considerations for Hard Tag application during the confection process:



- Caution must be taken to ensure the merchandise is not damaged as the Tag is applied. For shoes, the pin should be passed through the eyelet.
- Never fix the Hard Tags to the brand label, the textile composition label or to any other information label relevant to the garment. (see pictures 3 and 4 above illustrations)
- As a rule, Tags should be placed near the garment barcode, to ensure that cashiers will see and remove it.
- Always tag the same garment type in the same position. This will improve merchandising and help point of sale staff to remove the Tags during purchase.
- Tags should be applied in a visible area to act as a shoplifting deterrent and to allow for easy spotting and removal at the point of sale.
- Checkpoint does not recommend the application of Hard Tags to garments made of viscose, silk or elastane. In such cases Checkpoint recommends using the Pocket Tag. Each purchasing department will indicate which specific Tag is to be used for every garment type.

For any questions regarding this or any other labelling process contact your local Checkpoint representative.



## Important Considerations for Hard Tag application during the confection process:

- Hard Tags are highly recommended for use with apparel garments and accessories as a visual deterrent.
- In general they are not recommended for finer fabrics such as silk or lycra.
- Checkpoint offers a Hard Tag solution that is specifically designed to travel with the garment from source to store.



For any questions regarding this or any other labelling process contact your local Checkpoint representative.

Checkpoint Systems is a global leader in shrink management, merchandise visibility and apparel labelling solutions. Checkpoint partners with retailers and their suppliers to reduce shrink, increase shelf availability, ensure labelling consistency and achieve operational excellence. Checkpoint's solutions enable retailers to enhance the shopping experience for consumers, and grow their businesses profitably.

Electronic Article Surveillance



Solutions @ Source



High-Theft Solutions



Shrink Management Software



Merchandise Visibility



Apparel Labelling Solutions



Video, Alarm and Monitoring Services



Retail Merchandising Solutions

CONTACT  
Solutions\_Source@checkpt.com

